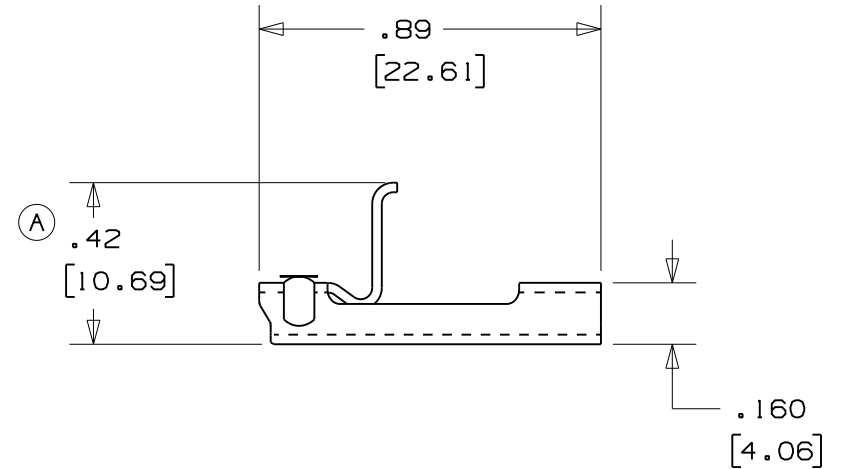
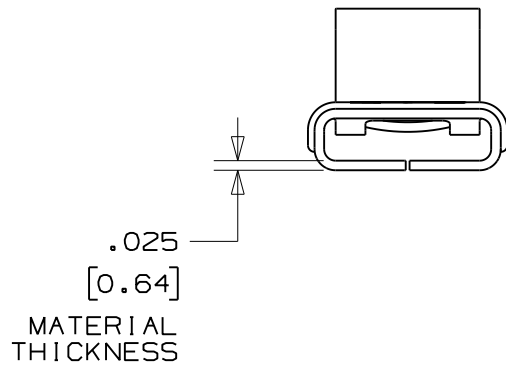
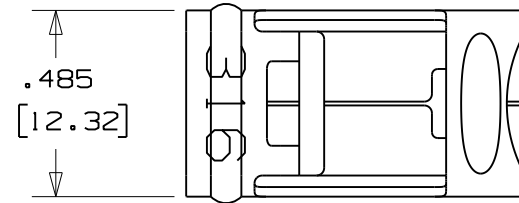


Ⓑ

- NOTES: 1. FOR USE WITH PANDUIT, MSW38T15-CR4 & MSW38T15-CR6 CONTINUOUS STRAPPING.
2. APPLICATION TOOL: BT2MS75, BT2HT
3. DIMENSIONS IN BRACKETS [] ARE IN MILLIMETERS
4. UNLESS OTHERWISE SPECIFIED TOLERANCES ARE:
 .XX = ±.02 [.5]
 .XXX = ±.010 [.25]
5. MATERIAL: 304 OR 316 STAINLESS STEEL



03A	10/08	JAMB	SKB	ORIG CAD FILE SPEC WAS S41147_03 NOTE 2: APPLICATION TOOL BT1HT REPLACED BY BT2HT			
03	10/04	JAMB	EJD	Ⓒ STRAPPING PART NO'S. IN TITLE BLOCK CHANGED TO BUCKLE PART NO'S. DUE TO A TYPING ERROR.	12067	CCH	JJB
02	9/04	JAMB	EJD	Ⓑ VOIDED PART NO'S. MS375X15-TSR & MS375X15-TSR316 & REPLACED BY PART NO'S. MSW38T15-CR4 & MSW38T15-CR6 ON NOTE 1	12052	CCH	JJB
01	3/04	BRH	EJD	Ⓐ CHANGED TO .42, WAS .43	11500	CCH	JJB
00	9/03	BRH	EJD	RELEASED	11154	CCH	JJB
REV	DATE	BY	CHK	DESCRIPTION	ECN #	PM	CUST

N41147BS_DC/03A

PANDUIT

CORP.

TINLEY PARK, ILLINOIS

.375 in [9.52] ENHANCED METAL STRAPPING BUCKLE
 MSBW38-C4 & MSBW38-C6
 Ⓒ CUSTOMER DRAWING

DRAWN BY	CHK'D	SCALE	DRAWING NO.
BRH	EJD	2X	N41147BS_DC